

**F** - Maximum vehicle weight fully loaded with trailer

**G** - Maximum vehicle weight on front axle

**H** - Maximum vehicle weight on rear axle

**I** - Engine type

**L** - Body version code

**M** - Spare part code

**N** - Smoke opacity index (for diesel engines)

## BODYWORK PAINT IDENTIFICATION PLATE

The plate (**fig. 4**) is applied on the inner bonnet panel.

It bears the following data (**fig. 5**):

**A** - Paint manufacturer

**B** - Colour name

**C** - LANCIA colour code

**D** - Respray and touch up code

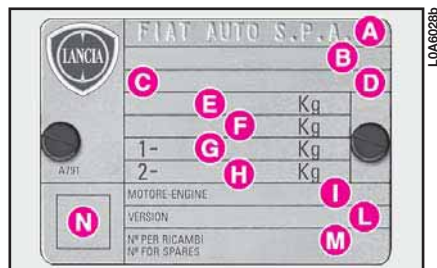


fig. 3



fig. 4



fig. 5